

TECHNIQUE DE L'EMPREINTE (HAUT-RELIEF/BAS-RELIEF) _ THÈME : PAVAGE

Les 17 groupes de pavage

périodique du plan sur la base de trois isométries fondamentales:

- rotation
- translation
- réflexion



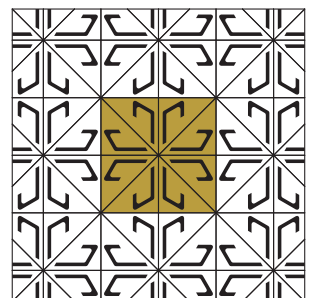
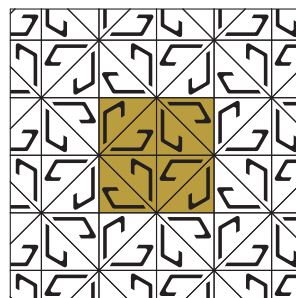
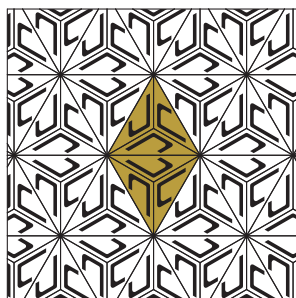
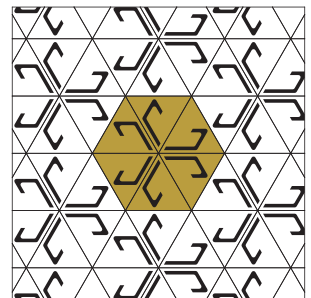
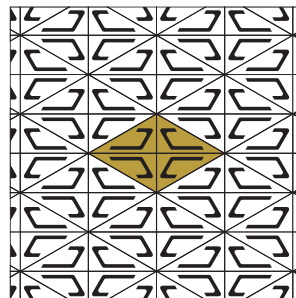
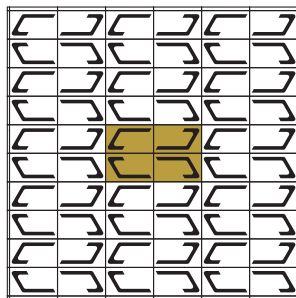
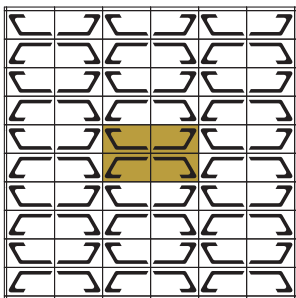
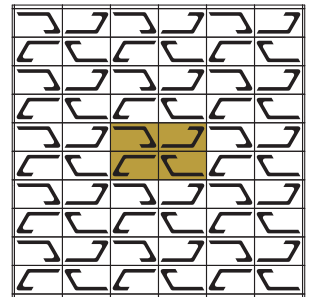
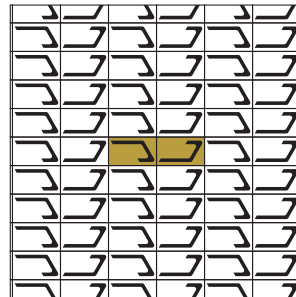
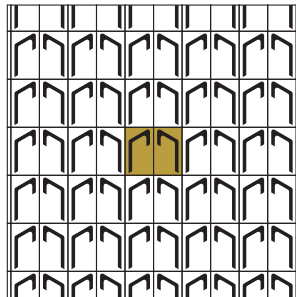
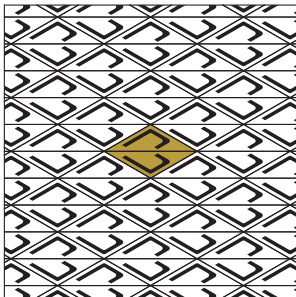
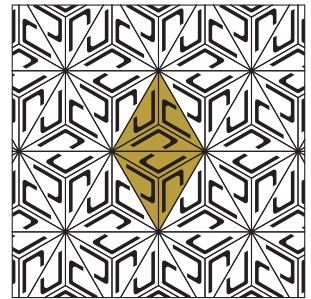
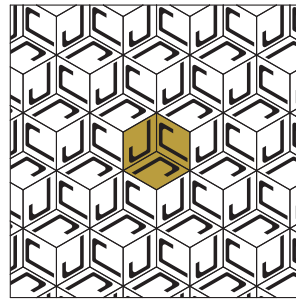
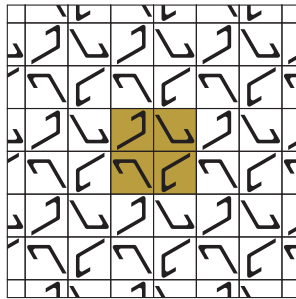
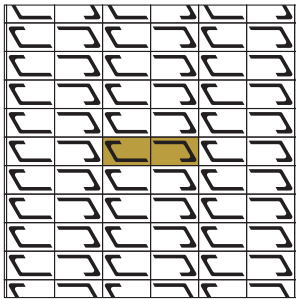
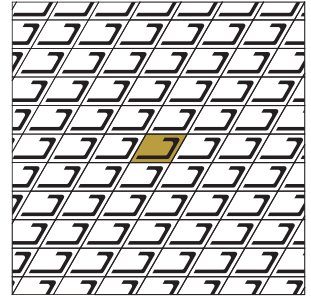
rotation



translation

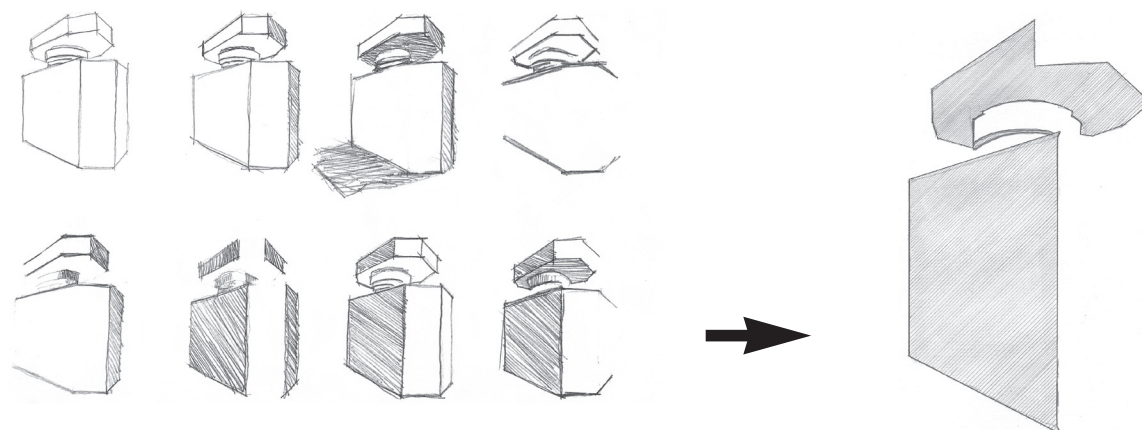
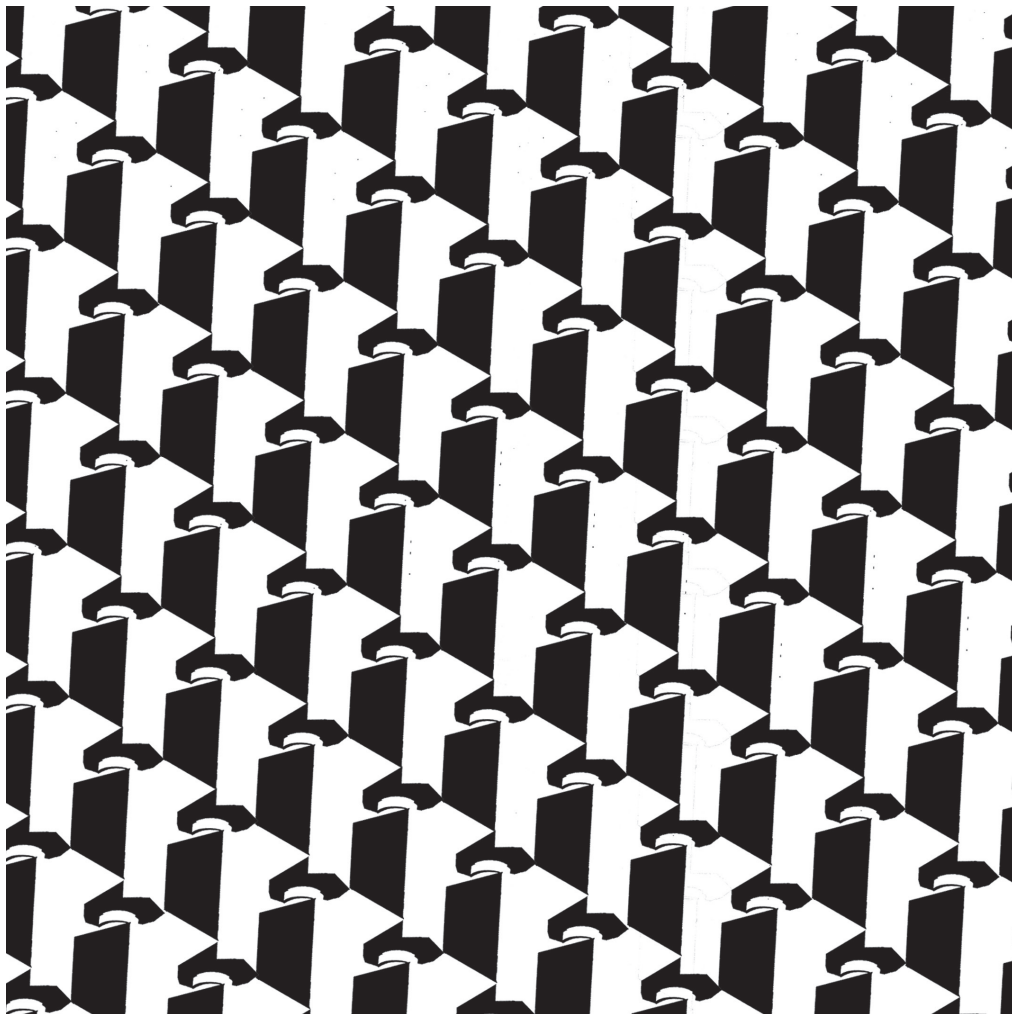


réflexion



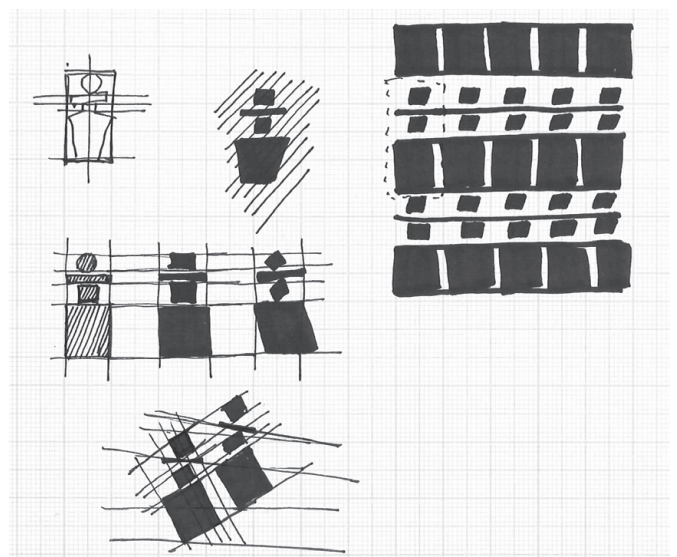
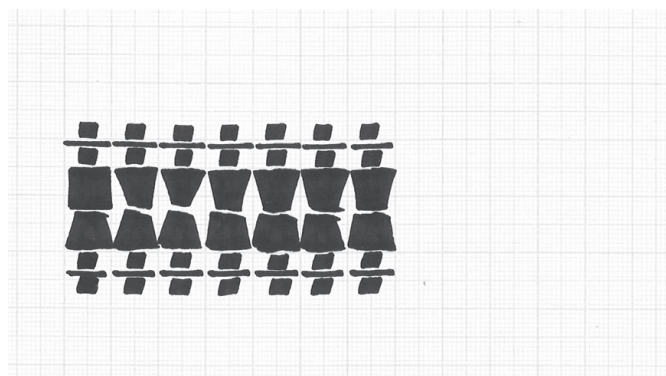
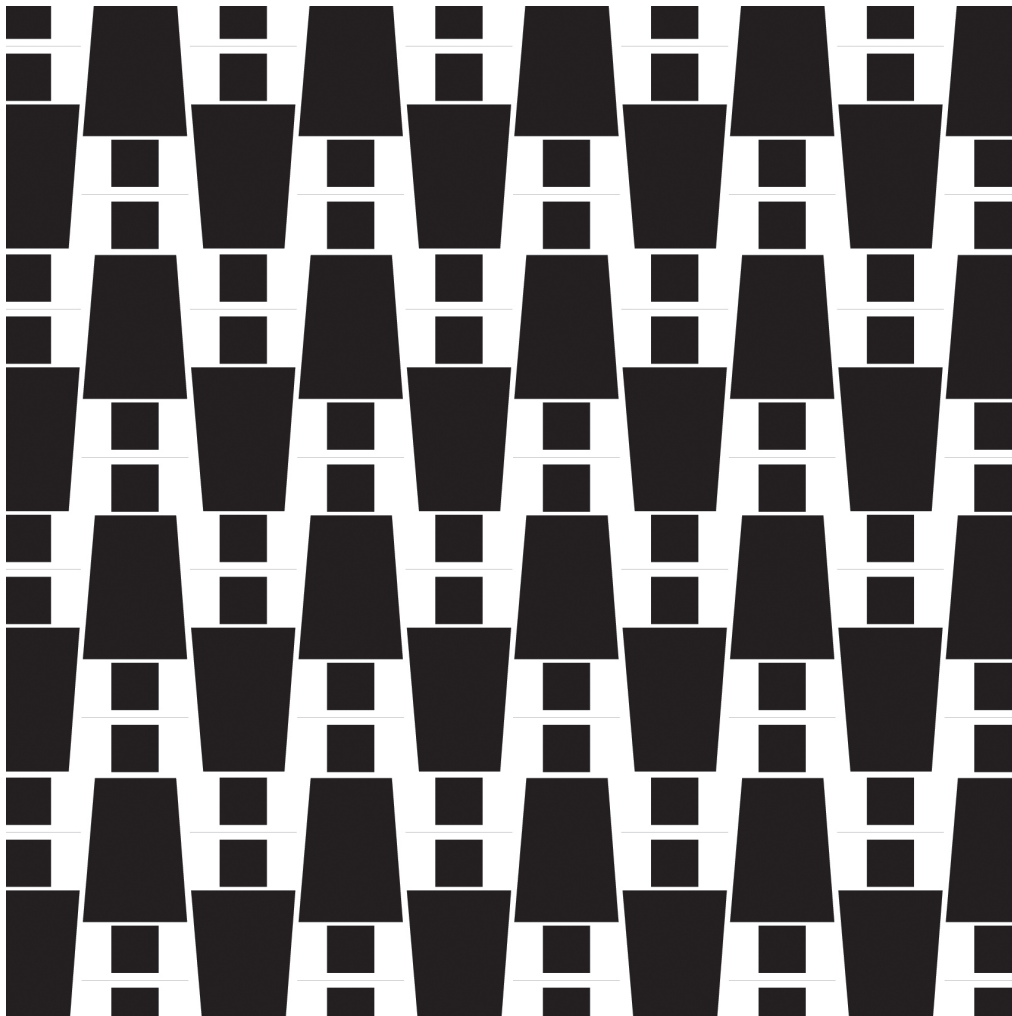
TECHNIQUE DE L'EMPREINTE (HAUT-RELIEF/BAS-RELIEF) _ THÈME : PAVAGE

Exemples de pavage du plan



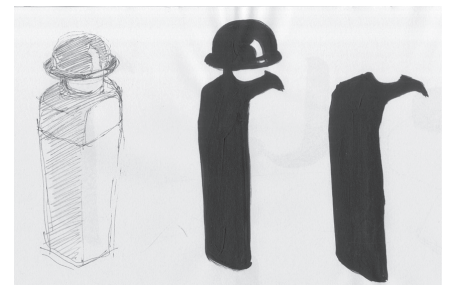
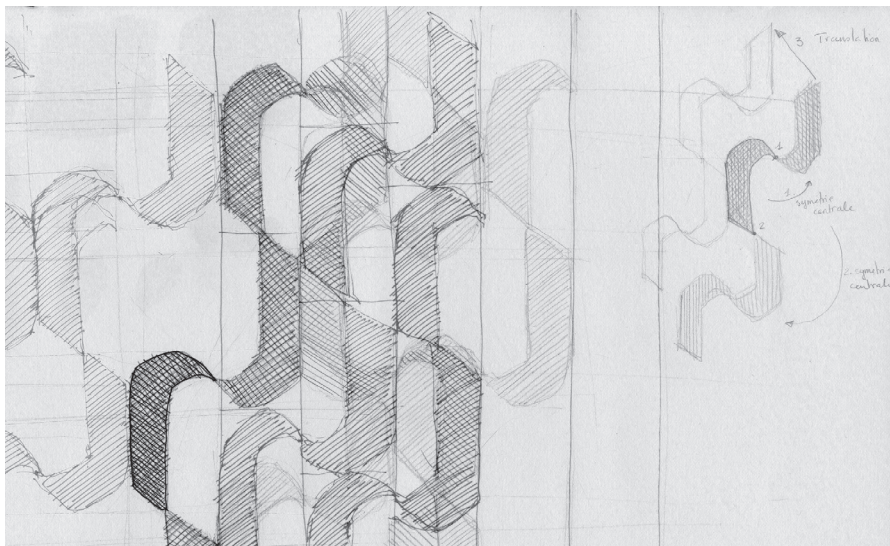
TECHNIQUE DE L'EMPREINTE (HAUT-RELIEF/BAS-RELIEF) _ THÈME : PAVAGE

Exemples de pavage du plan



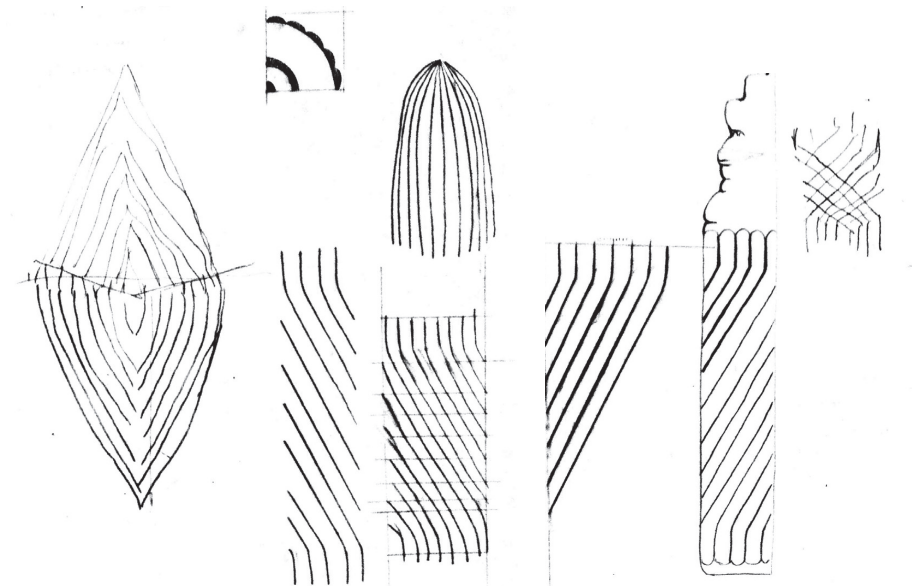
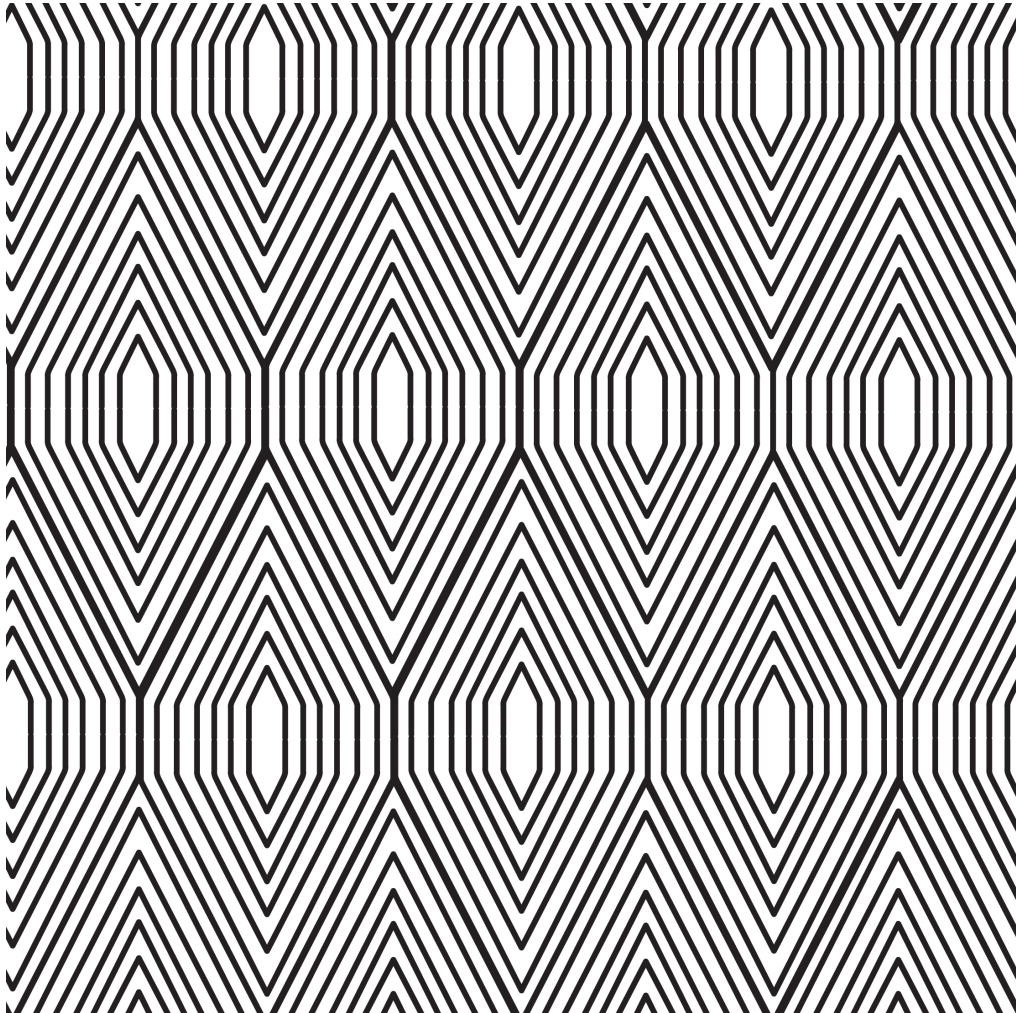
TECHNIQUE DE L'EMPREINTE (HAUT-RELIEF/BAS-RELIEF) _ THÈME : PAVAGE

Exemples de pavage du plan



TECHNIQUE DE L'EMPREINTE (HAUT-RELIEF/BAS-RELIEF) _ THÈME : PAVAGE

Exemples de pavage du plan



TECHNIQUE DE L'EMPREINTE (HAUT-RELIEF/BAS-RELIEF) _ THÈME : PAVAGE

Exemples de pavage du plan

