

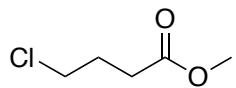
question 1 - Insaturation : 1

Barème:

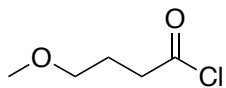
Degré d'insaturation: 0.25

Structure chimique: 2.75

Résultat final = somme des 4 questions / 2



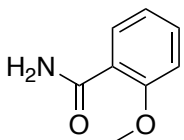
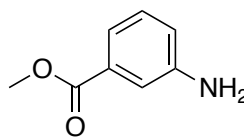
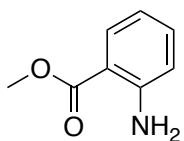
Chemical Formula: $C_5H_9ClO_2$
Exact Mass: 136.03



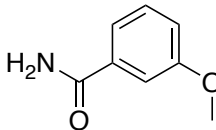
not compatible with IR

question 2 - Insaturation : 5

Chemical Formula: $C_8H_9NO_2$
Exact Mass: 151.06

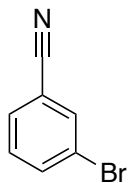


not compatible with IR



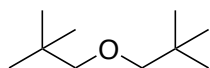
not compatible with IR

question 3 - Insaturation : 6



Chemical Formula: C_7H_4BrN
Exact Mass: 180.95

question 4 - Insaturation : 0



Chemical Formula: $C_{10}H_{22}O$
Exact Mass: 158.17